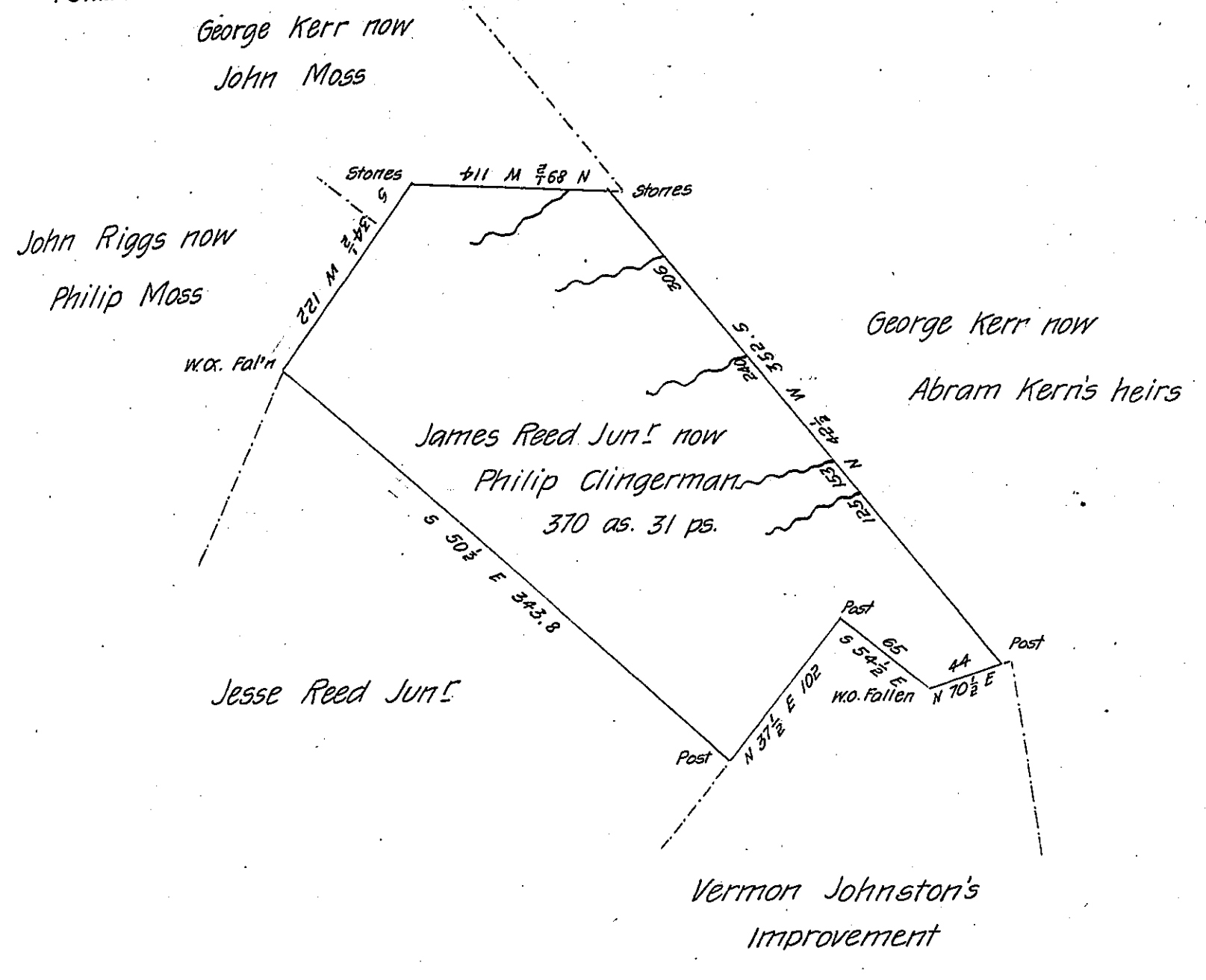


FORM No. 1.



Situate in Southampton township Bedford County Containing 370  
 acres 31 perches and allowance of 6 per cent &c. Surveyed the 19<sup>th</sup> & 20<sup>th</sup>  
 days of September 1854 in pursuance of an Order of Resurvey granted to  
 Philip Clingerman the 9<sup>th</sup> of August 1854 on a warrant granted in the  
 name of James Reed Junr dated the 21<sup>st</sup> of February 1794.

Courses according to the true bearings

To Daniel Gams C.S.

J. Porter Brawley Esq.

S. G.

IN TESTIMONY that the above is a copy of the original remaining on file in  
 the Department of Internal Affairs of Pennsylvania, made  
 conformably to an Act of Assembly approved the 16th day of  
 February, 1833, I have hereunto set my Hand and caused  
 the Seal of said Department to be affixed at Harrisburg,  
 this nineteenth day of October 1906

*Loach Brown*  
 Secretary of Internal Affairs.